



# Lessons from Sacramento

PAUL R. SPENCER

STAFF ATTORNEY

DISABILITY RIGHTS CALIFORNIA



Vote Centers and Accessibility

334 views LIKE DISLIKE SHARE SAVE ...



Accessible Vote by Mail for Voters with Disabilities

386 views LIKE DISLIKE SHARE SAVE ...



EXIT

BALLOT OFFICER

CVR Officer

SACRAMENTO COUNTY

SACRAMENTO COUNTY VOTER REGISTRATION AND ELECTIONS

COMISIÓN DE SACRAMENTO REGISTRO DE VOTANTES Y ELECCIONES

沙加縣選舉登記與選務處

www.elections.sacramento.gov

(916) 875-6451

Register, Vote, Volunteer.

Regístrate, Vota, Sé Voluntario.

登記、投票服務。



eo Coun  
ions Offi  
ity Clerk-f  
ethefuture.

SACRAMENTO  
COUNTY

SACRAMENTO COUNTY VOTER REGISTRATION AND ELECTIONS  
CONDOMIO DE SACRAMENTO REGISTRO DE VOTANTES Y ELECCIONES  
沙加福度縣選民登記與選務處  
www.elections.sacounty.net  
(916) 875-6451  
Register, Vote, Volunteer.  
Regístrate, Vota, Séas Voluntario.  
登記, 投票, 服務。

### Voter's Choice Act Digest: Election Administration Plan Voter Ed & Outreach Plan Checklist

*See Reference Key attached for abbreviations.*

Check ✓	E- Date	County Timeline	Description	Elections Code
			<b>EAP must include Voter Education &amp; Outreach Plan with descriptions of:</b>	§4005(a)(10)(l)(i)
<input type="checkbox"/>			Media, social media, newspapers, radio, & TV use to inform public of election & promote toll-free #.	§4005(a)(10)(l)(i)(I)
<input type="checkbox"/>			Media plans for language minority communities	§4005(a)(10)(l)(i)(I)
<input type="checkbox"/>			Media plans to inform voters of accessibility options	§4005(a)(10)(l)(i)(II)
<input type="checkbox"/>			Community presence to educate voters	§4005(a)(10)(l)(i)(III)
<input type="checkbox"/>			Accessible info that will be posted to accessible website	§4005(a)(10)(l)(i)(IV)
<input type="checkbox"/>			Methods used to identify language minority communities.	§4005(a)(10)(l)(i)(V)
<input type="checkbox"/>			Plans to educate the public about the VCA	§4005(a)(10)(l)(i)(VI)
<input type="checkbox"/>			Plans to educate all required language communities (including at least 1 bilingual workshop for each community.)	§4005(a)(10)(l)(i)(VI)(ia)
<input type="checkbox"/>			Plans to educate the disability community (including at least 1 workshop with disabled voters and advocates.)	§4005(a)(10)(l)(i)(VI)(ib)
<input type="checkbox"/>			Projected budget for outreach activities.	§4005(a)(10)(l)(i)(VII)
<input type="checkbox"/>			Comparison to past budget for outreach.	§4005(a)(10)(l)(i)(VII)
<input type="checkbox"/>			Plan for English PSA to inform public & promote toll-free #. Must be accessible for voters who are deaf or hard of hearing and voters who are blind or visually impaired.	§4005(a)(10)(l)(i)(VIII)
<input type="checkbox"/>			Plan for PSAs, in media serving each required language community, to inform public & promote toll-free #.	§4005(a)(10)(l)(i)(IX)
<input type="checkbox"/>			Two direct contacts with voters (in addition to other required contacts.)	§4005(a)(10)(l)(i)(X)
			<b>EAP must also include:</b>	



**OFFICIAL BALLOT DROP BOX  
Box #2-1**

Place your ballot here  
Coloque su boleta aquí  
ਆਪਣਾ ਮਤਪੱਤਰ (ਬੈਲਟ) ਇੱਥੇ ਪਾਓ

No postage is necessary when depositing your Vote by Mail Ballot into this drop box. Vote by Mail ballots will not be accepted after 8:00 p.m. on Election Day, unless there are voters in line at the time the polls close, or the time for the closing of the polls has been extended by a court order.

No se requiere franquicio al depositar su boleta de votación por correo en este buzón. Las Boletas de Votación por Correo no serán aceptadas después de las 8:00 p.m. el día de las elecciones, a menos que haya votantes en línea en el momento en que se cierran las urnas, o el tiempo para el cierre de las urnas haya sido extendido por una orden judicial.

ਉਸ ਵਰਤੋਂਕਾਰੀਆਂ ਲਈ ਜਿਨ੍ਹਾਂ ਵੋਟ ਪਾਉਣ ਲਈ ਆਪਣੇ ਮਤਪੱਤਰ (ਬੈਲਟ) 'ਤੇ ਟਿੱਕਣ ਲਾਉਣ ਦੀ ਜ਼ਰੂਰਤ ਨਹੀਂ ਹੈ, ਉਹ ਵੋਟਾਂ ਵੀ ਆਪਣੇ ਮਤਪੱਤਰ (ਬੈਲਟ) ਭਾਈ ਆਉਣ ਵੇਲੇ 'ਤੇ 'ਤੇ 8:00 ਵਜੇ ਤੋਂ ਬਾਅਦ ਅਸੰਪੂਰਨ ਮੰਨੀ ਜਾਣਗੀ। ਜੇਕਰ ਵੋਟ ਪਾਉਣ ਦੀ ਸਮੇਂ ਦੇ ਸਮੇਂ ਤੱਕ ਵੋਟ ਪਾਉਣ ਵਾਲੇ ਲੋਕਾਂ ਦੀ ਗਿਣਤੀ ਵਧਾਉਣ ਦੀ ਜ਼ਰੂਰਤ ਮਹਸੂਸ ਹੋਵੇ।

REGISTRAR OF VOTERS

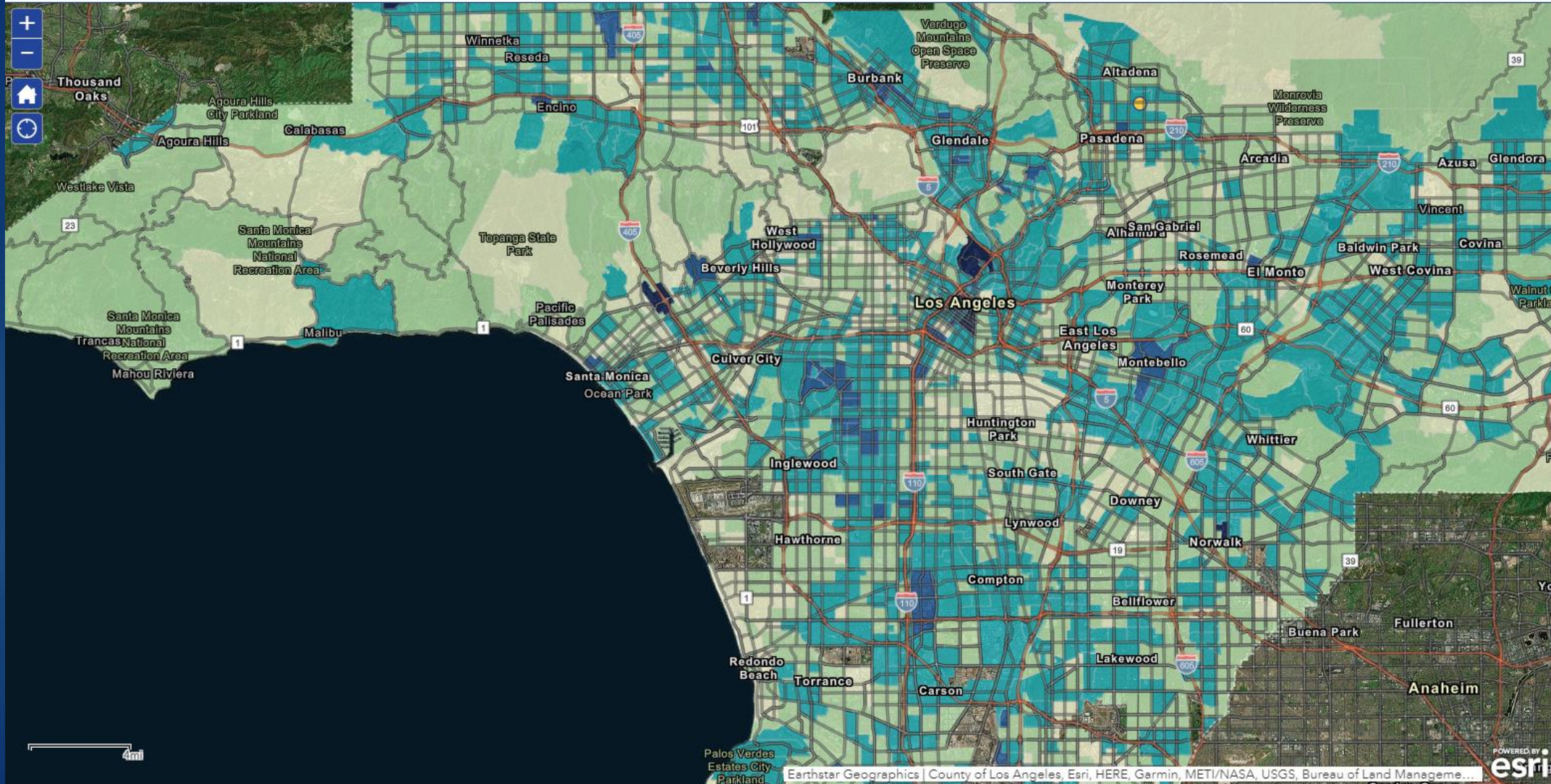






- 1
- 2
- 3
- 4
- 5
- 6
- 7
- 8
- 9
- 10
- 11
- 12
- 13
- 14
- 15

## L. Voter - Voters with Disabilities



**Legend**

Comments - Disabl

Population with Dis

Percent

- Very Low
- Low
- Moderate
- High
- Very High



Questions?

[PAUL.SPENCER@DISABILITYRIGHTSCA.ORG](mailto:PAUL.SPENCER@DISABILITYRIGHTSCA.ORG)