

Research Questions:

- **Who are the state's vote-by-mail voters – has the demographic composition of these voters changed over the last decade? – Issue Brief # 1**
- What is the demographic composition of unsuccessful vote-by-mail voters? – Issue Brief # 2
- What is the county breakdown of reasons for ballot rejection? – Issue Brief # 3
- How would the make-up of the electorate be affected if unsuccessful VBM voters were able to cast successful VBM ballots? – Issue Brief # 4

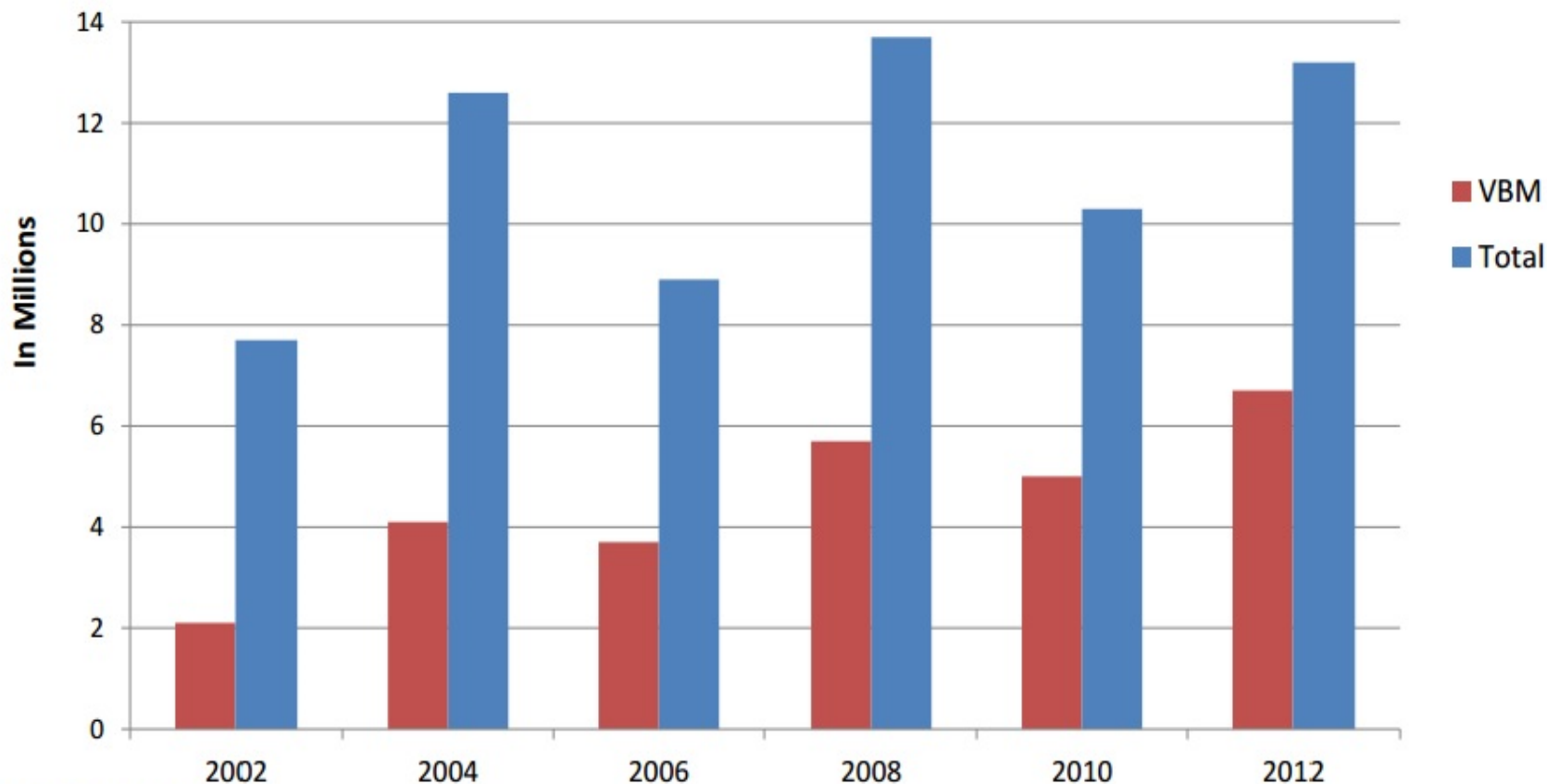
Who are the state's vote-by-mail voters - has the demographic composition of these voters changed over the last decade?

- **VBM Use Rates by Sub-Group**
- **Composition of VBM vs Poll Voter Populations**
- **Geographic Variation**

VBM Use Rates by Sub-Group

Strong Growth in the VBM Use

California Vote by Mail Use: 2002-2012
General Elections



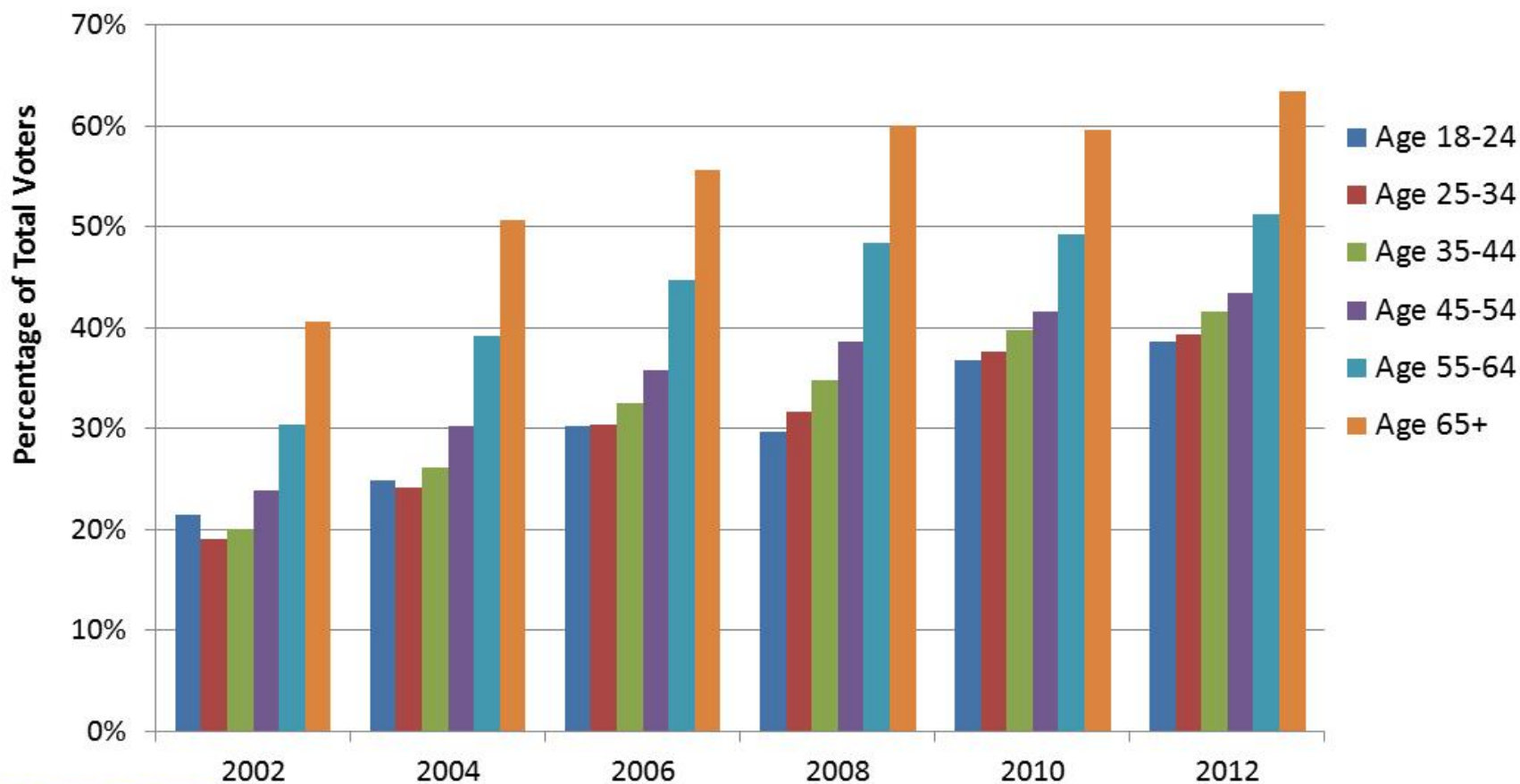
Different Sub-Groups Use VBM at Different Rates

Youth and Older Voters: Disparities in VBM Use

- 2012 - Only voters age 55 and older us VBM at a rate greater than 50% - 63.4%.
- 2012 - Youth voters – lowest VBM use rate of all age groups – 39%.
- Change over the decade:
 - Youth had the lowest increase in their percent use of VBM of all age cohorts
 - = youth increasing their proportional use of VBM more slowly than the rest of the state's voters.

Older Voters Driving State's 50% Use Rate

California Age Cohort Vote: Percent Vote by Mail General Elections

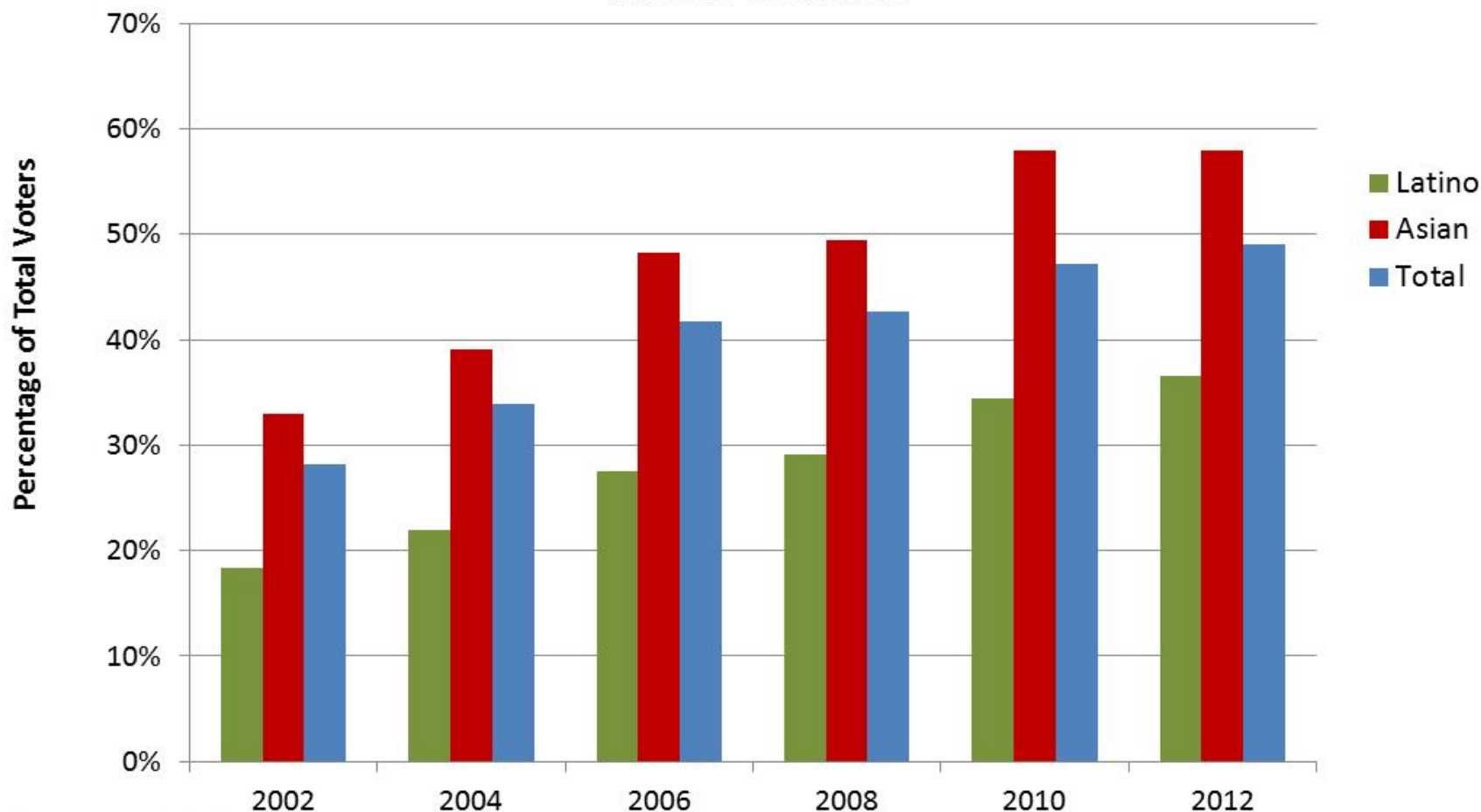


Latino and Asian VBM Disparities

- 2012 - Latino VBM proportional use rate – 36.6%
- 2012 – Asian VBM proportional use rate – 58%
- Change over the decade:
- Latino VBM increase was lower
- The gap between the Latino and Asian proportional VBM use rates grew over the decade – from about 15 percentage points to over 21 percent percentage points.

Latinos and Asians: Disparities in VBM Use

California Latino and Asian Vote: Percent Vote by Mail
General Elections



Composition of VBM vs Poll Voter Populations

Breakdown of VBM Ballots....

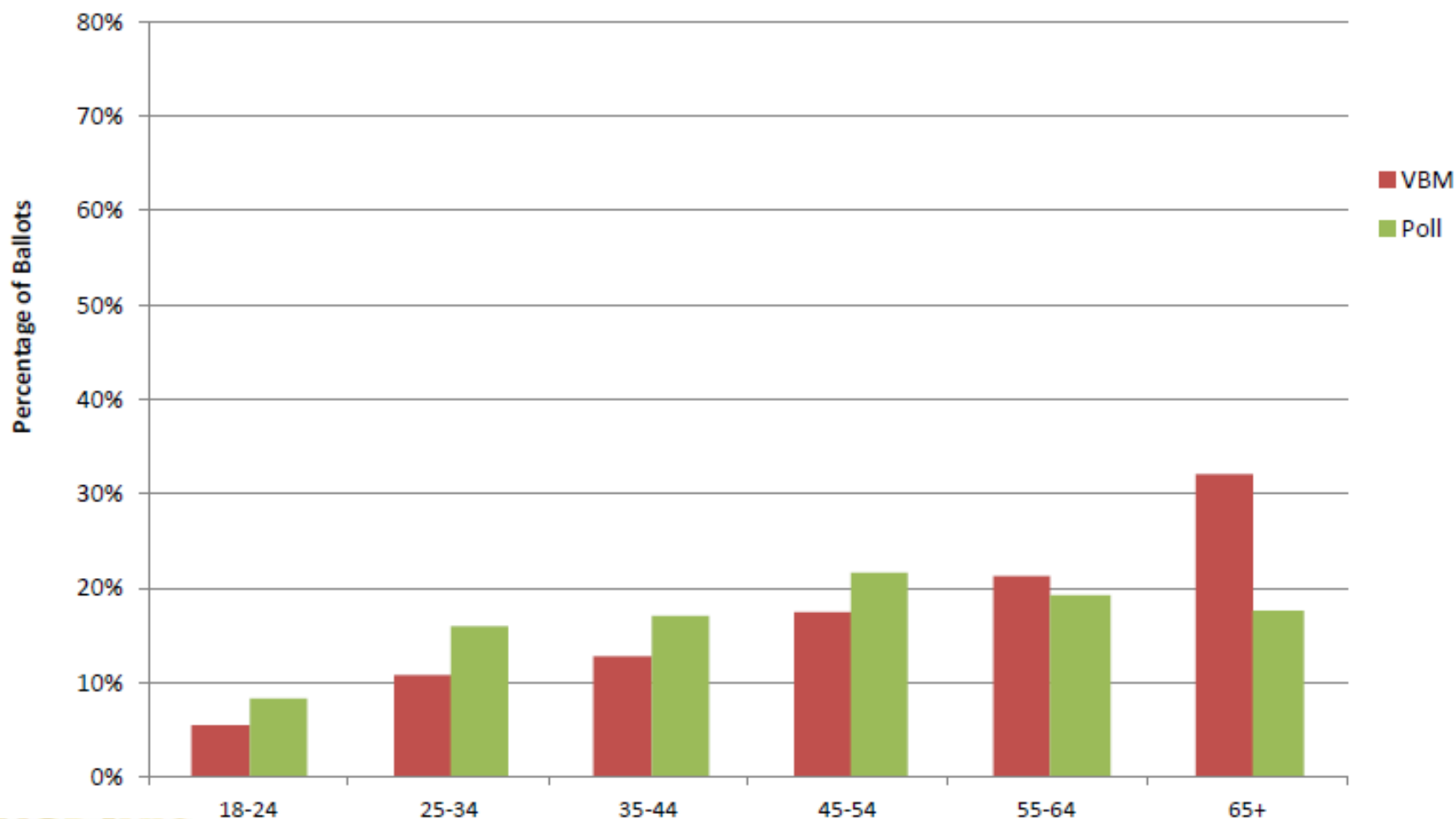
- VBM Voters are:
- Older
- Less Latino
- More Asian
- Less Democratic
- Different Regional Patterns

Breakdown of VBM Ballots By Age

- 2012 - 71% of VBM ballots are Age 45 +
- 2012 - 58.5% of poll ballots are Age 45 +
- Change over the decade:
 - Age 65 + still holds the largest proportion of VBM ballots – 32.1% (up from 28.9% in 2004)
 - Age **45-54** holds the largest proportion of poll ballots – 21.7% (slightly decreased since in 2004)

VBM: Greater Proportions of Older Voters

2012 California Ballot Type: Percent by Age Cohort
General Election

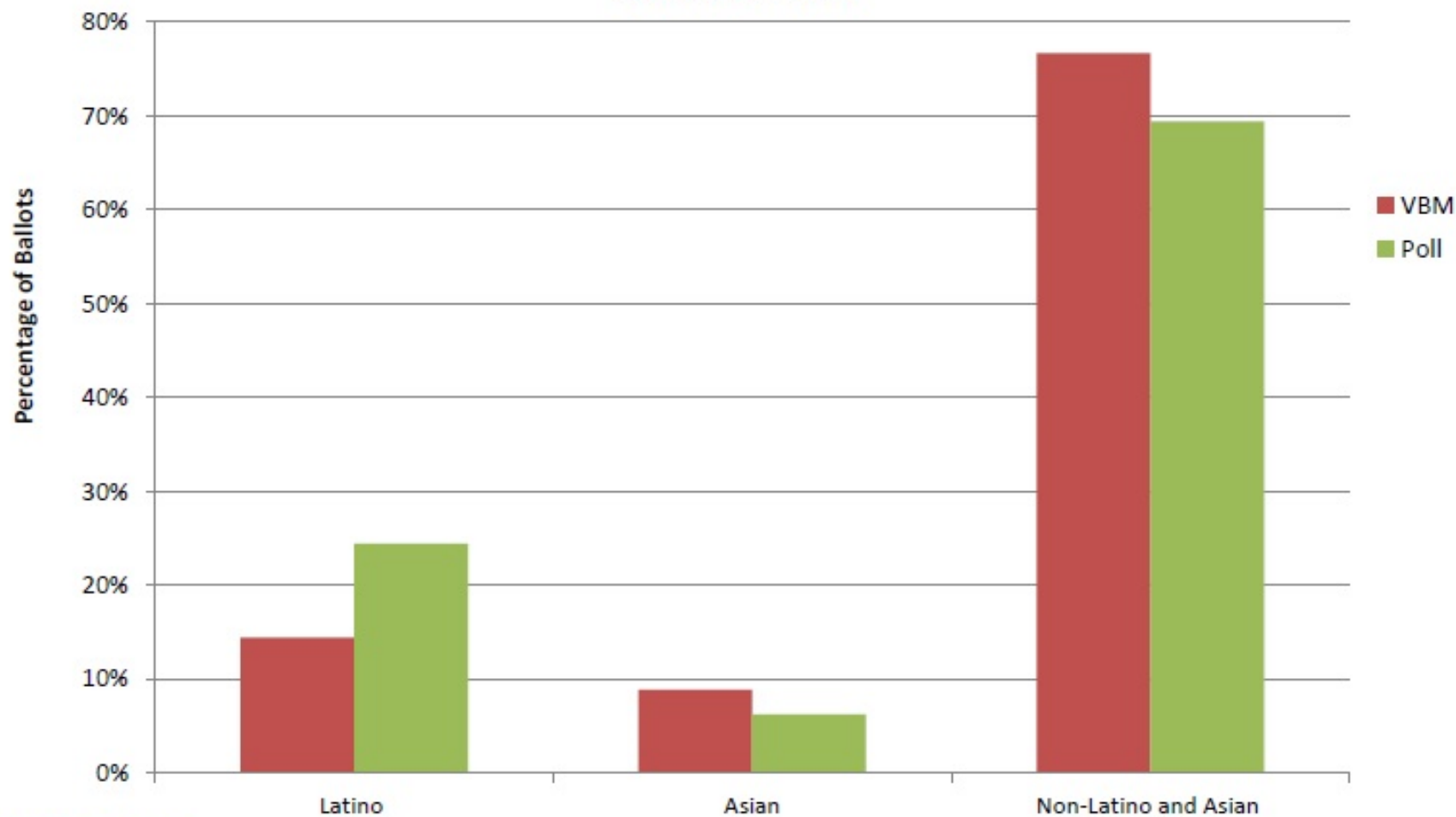


Breakdown of VBM Ballots By Race and Ethnicity

- In 2012...
- Latinos are underrepresented in VBM voters and Asians overrepresented.
- Latinos made up 14.5% of VBM ballots, but 24.4% of poll voters.
- Since 2004, Latino increases in the proportion of the poll vote have slightly outpaced increases in their share of VBM voters.
- Asians make up 9% of VBM ballot versus 6% of poll voters.

VBM Voters: Few Latinos and More Asians

2012 California Ballot Type: Percent Latino and Asian
General Election



Why does it matter if there are differences in the make-up of VBM vs. Poll Voters?

- Impacts:
- Outreach and education to VBM voters and/or future VBM voters
- Services provided to VBM voters
- As some counties look to possibly reduce polling places – need to identify if there is disparate impact
- = critical to utilize data in VBM policy discussions.

Thank you

Mindy Romero
Director, California Civic Engagement Project
UC Davis
msromero@ucdavis.edu