

San Diego County

Language Program

- Full-Time Language Coordinators
- Targeted Outreach Efforts
- Proofed Voting Material in All Languages
- Language Advisory Group
- Bilingual Poll Workers
- Posting Registered Voter Data
- Election Day Monitoring
- Special Projects:
 - documentary videos
 - voter education video vignettes
 - Etc.

1,652,875

292

4

2,335,922

75

24

368

1,825

6

446,174

6,460

4



Bầu Cử San Diego
NHIỀU
PHÒNG PHIẾU

Ngày 7 tháng Sáu, năm 2016
tùy theo nhiệm vụ

Hear Ye!
To Vote Again!
Presidential Primary Election

San Diego County Registrar of Voters
5600 Overland Ave., San Diego, CA 92123



AMAGITAN NG KOREO
ang mga koreano sa San Diego County Registrar of Voters
ang mga koreano sa San Diego County Registrar of Voters
ang mga koreano sa San Diego County Registrar of Voters

CẦN NHANH
cho ngày
Bầu Cử Sơ Bộ Tổng
ngày 7 tháng Sáu,
Thủ lao từ \$90 đến \$190/ngày
tùy theo

Reciba un estipendio de hasta \$190 al día
Llame: (858) 565-5800 (Inglés)
(858) 505-7247 (Español)

TIẾNG VIỆT
CÚC

NEU QUY THEO MUON
CHINH TR

County of San Diego

VOTE-BY-MAIL

AMAGITAN NG KOREO

APPLY NOW!

NO PARTY PREFERENCE
Presidential Primary Election
Para sa darating na Presidential Primary Election, ang mga botante nang walang partido lamang ang pinapayagang pansamantalang bumoto sa ibang Partido (cross over Party) na iboto ang kanilang kandidato para pangulo.
Kung nais ninyong iboto ang kandidato ng Republikan, Green, o Peace & Freedom Party kayo ay dapat muling magpahihisto sa o bago ang Ika-23 na Marso 2016.
Maasari kayong makakuha ng Registration Form sa www.sdvote.com, sa mga opisina ng Koreo, maraming opisina ng mga Sasakyang De-Motor (Motor Vehicle), o iba-ibang mga opisina ng Klerikal (Clerical) sa ibang mga opisina ng mga Botante (Voter) Suite 100, San Diego

QUY VI CO MUON



2016 總統初選

中英文雙語
\$115至\$190
補助津貼
(根據職務而定)

招募中

San Diego縣選民登記處
County of San Diego - Registrar of Voters
5600 Overland Ave., SAN DIEGO, CA 92123

中文服務部

投票站工作人員
擔任義工服務社區
積極參與選舉過程

高中生/大學生社區服務計劃
詳情請登入 <http://www.sdvote.com/content/>

San Diego縣的登記選民
符合登記投票資格的美國公民



HÃY NỘP ĐƠN NGAY!

6月7日
\$115至\$190/ngày tùy theo nhiệm vụ chỉ định
(858) 565-5800 (Tiếng Anh)
(858) 505-7253 (Tiếng Việt)

*請向招募組查詢

¿Quieres votar por el presidente en las elecciones primarias este 7 de junio del 2016?

Todos los electores registrados pueden votar en esta elección primaria. Votar para el presidente depende del partido con que está registrado. Compruebe su registro!

Si está registrado con un partido político:
Usted puede votar por un candidato que se postula para el presidente en ese partido.

Si está registrado como sin preferencia de partido o no partidista, puede votar en la primaria presidencial por uno de los siguientes partidos:

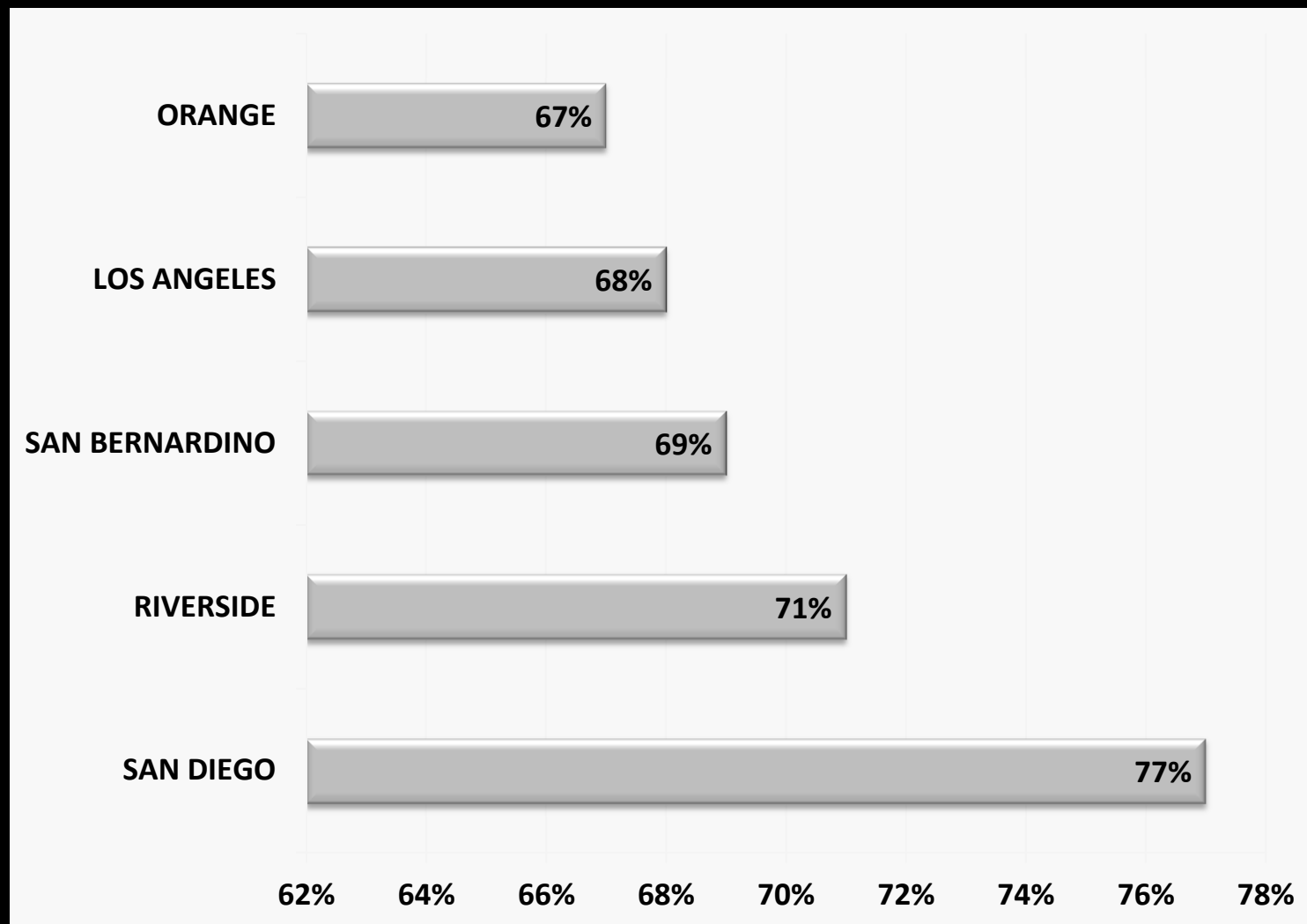
- Independiente Americano
- Demócrata

Si estás registrado con otro partido o como sin preferencia de partido y desea votar en la primaria presidencial por una de las siguientes partidos.

IMPORTANT ELECTION DATES

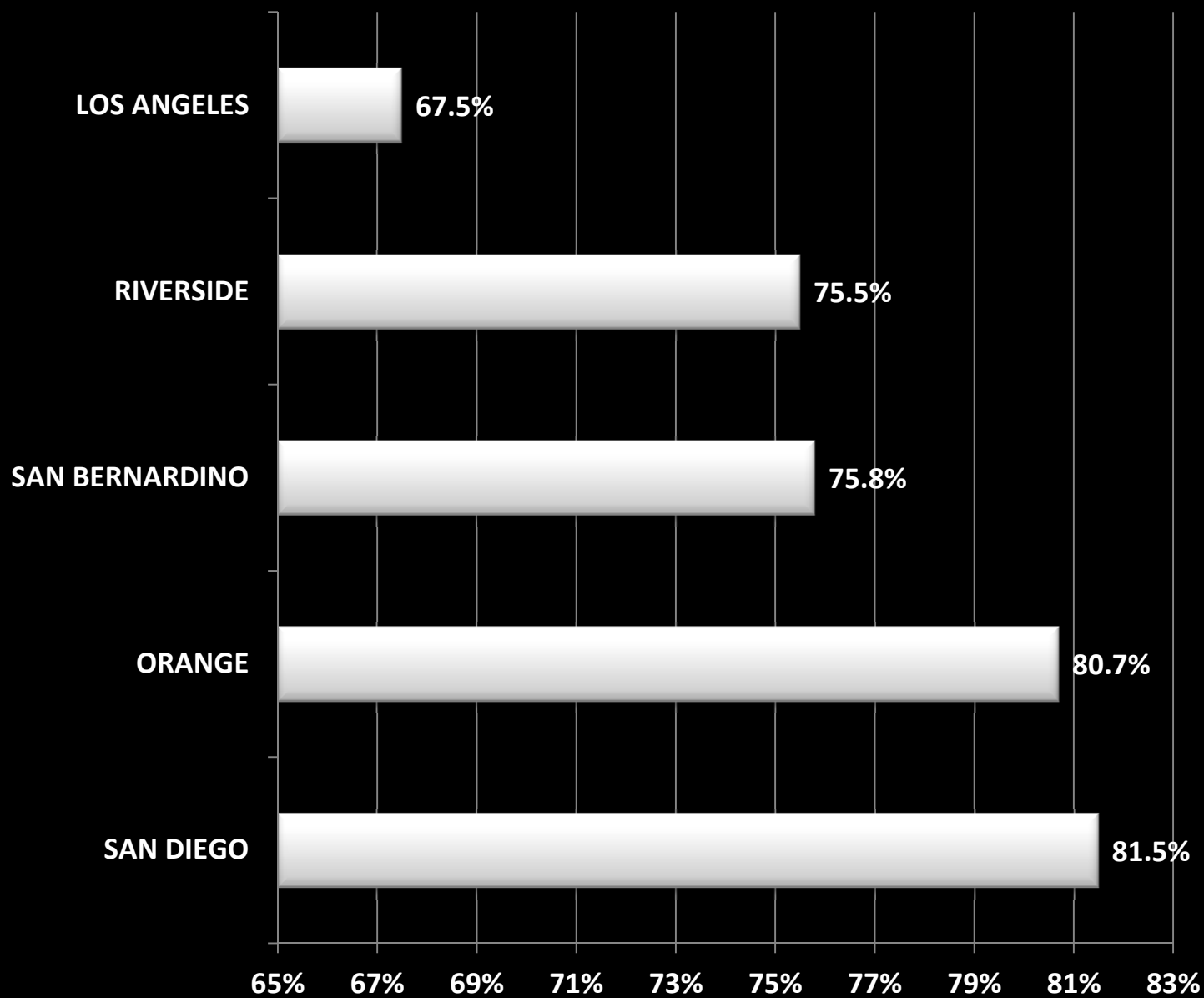
DATE	Initial mailing of ballots for May 9, 2016	What is it?
April 22, 2016	1st day of voting for May 9, 2016	
May 9, 2016		

2
0
1
2



T
U
R
N
O
U
T

2
0
1
6



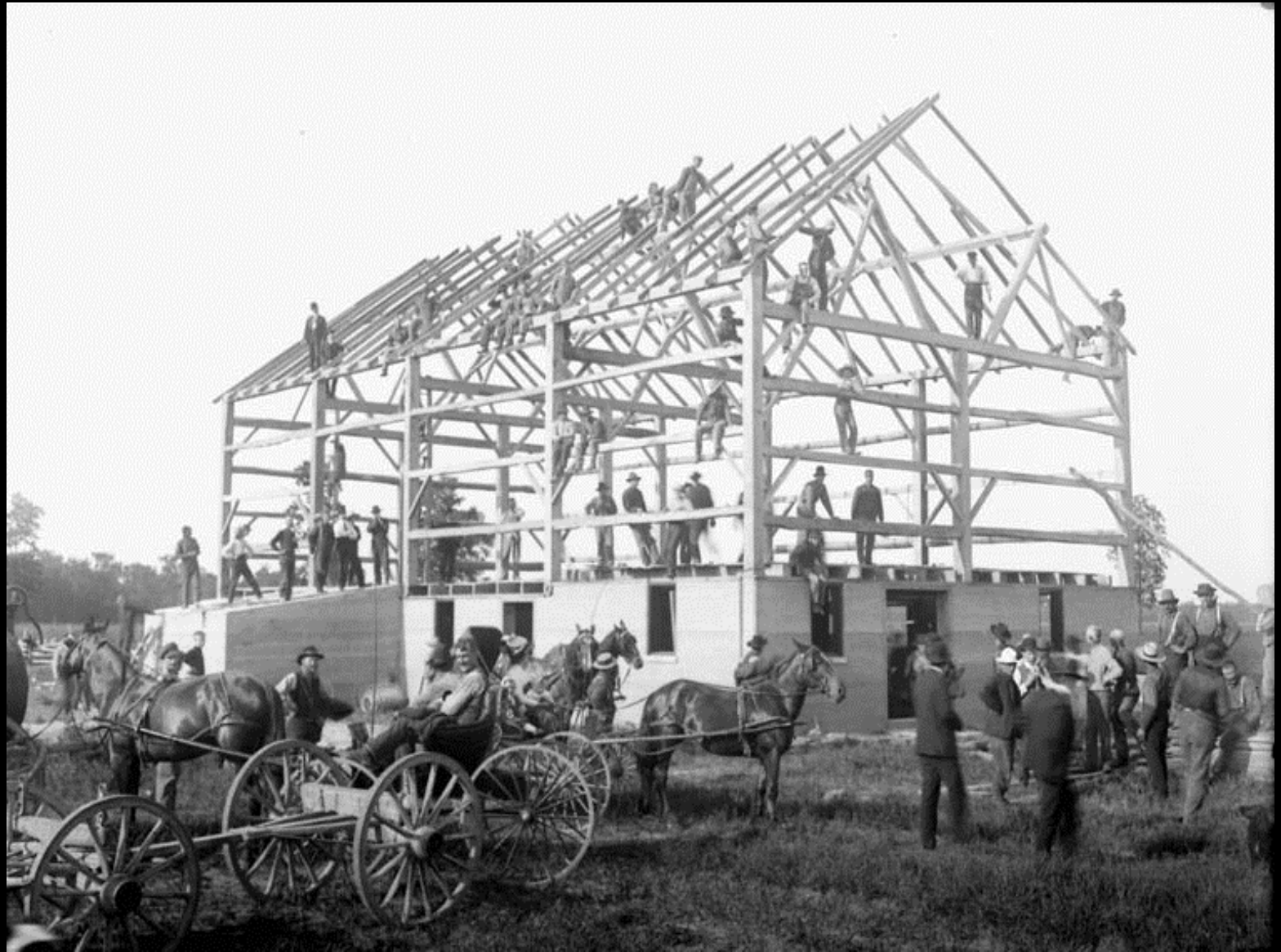
T
U
R
N
O
U
T

Voter Turnout

2016 TURNOUT

	Registered Voters	Total Voted	% Turnout	PMV Issued	% PMV	PMV Voted	% of PMV Voted
Presidential General Election - November 8, 2016	1,652,875	1,346,513	81.5%	1,016,190	61.5%	772,363	76%
Language (2016)	Registered Voters	Total Voted	% Turnout	PMV Issued	% PMV	PMV Voted	% of PMV Voted
Spanish	355,280	263,632	74%	211,093	59%	168,332	80%
Filipino	47,640	35,503	75%	30,837	65%	24,628	80%
Vietnamese	21,211	15,114	71%	14,672	69%	11,368	77%
Chinese	22,043	17,217	78%	15,027	68%	12,586	84%
Total/Avg %	446,174	331,466	74%	271,629	61%	216,914	80%

PMV = Permanent Mail Voter



Example

FIL-AM VOTE

- Consortium of 15 core Filipino organizations
- Effectively using resources and a consistent message
- Messaging
 - Voter Registration
 - Voter Education
 - Voter Protection
 - Get Out The Vote
- Designate high-level coordinator






Targeted Languages

REGISTERED VOTERS FILIPINO LANGUAGE BY BIRTHPLACE AND/OR BY REQUEST

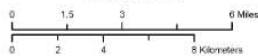
Legend

-  SANGIS.MUNICIPAL
-  SANGIS.ZIPCODE

FILIPINO LANGUAGE / TOTAL VOTERS

-  0%
-  1% - 2%
-  3% - 4%
-  5% - 6%
-  7% - 8%
-  9% - 14%

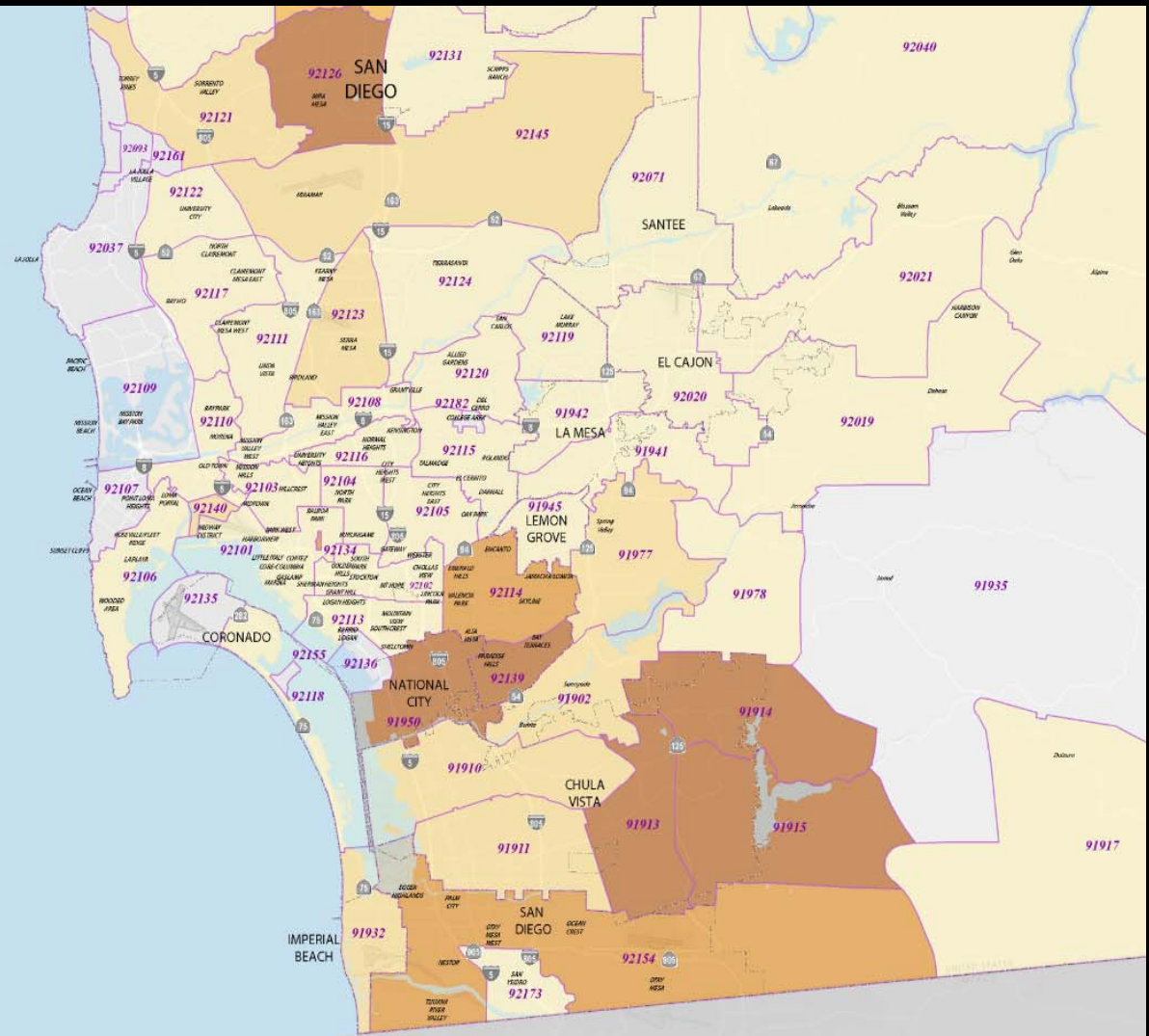
Scale 1:124,550



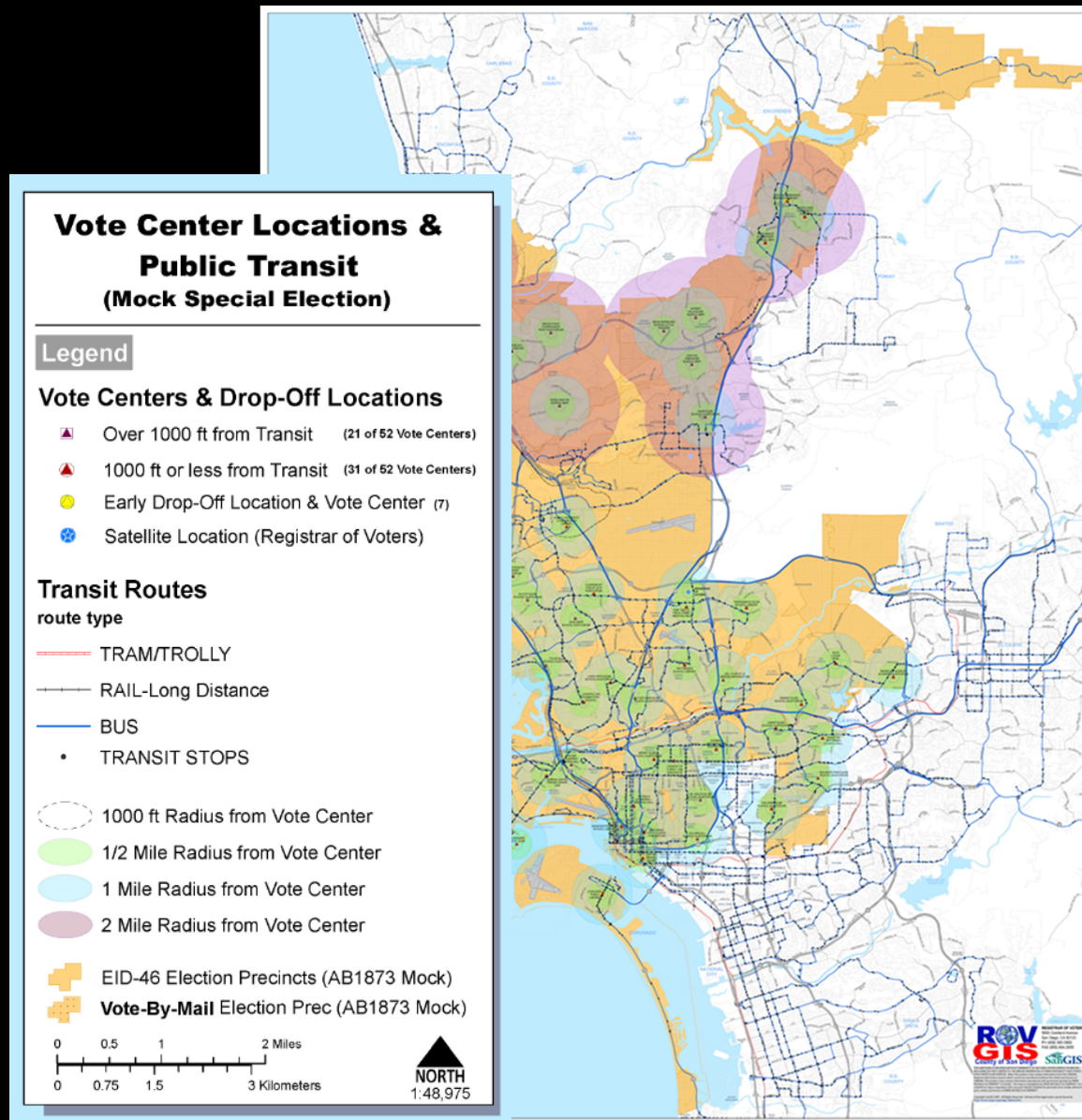
THIS MAP/DATA IS PROVIDED WITHOUT WARRANTY OF ANY KIND, EITHER EXPRESS OR IMPLIED, INCLUDING BUT NOT LIMITED TO THE WARRANTIES OF MERCHANTABILITY, FITNESS FOR A PARTICULAR PURPOSE, AND NON-INFRINGEMENT. The user assumes all liability for any use of this map/dataset. No liability shall be assumed by the County of San Diego for any use of this map/dataset. The user assumes all liability for any use of this map/dataset. The user assumes all liability for any use of this map/dataset.

Copyright 2009 - All Rights Reserved. Full text of this legal notice can be found at: http://www.sangis.org/legal_notices.htm

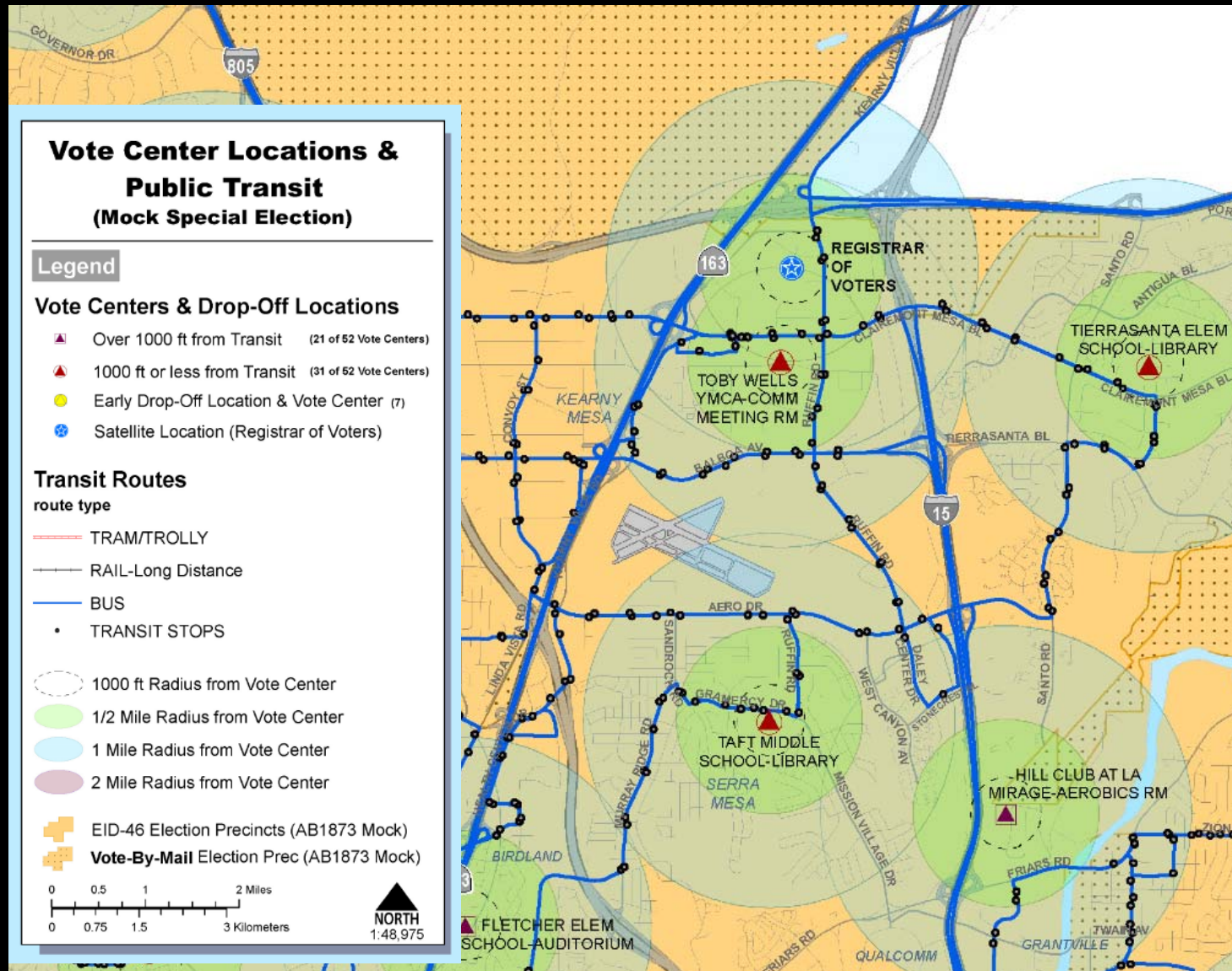
10/08/15



Modeling The Future



Modeling The Future



Winning Strategies

CHALLENGE

- Timely & Accurate Translation Of Election Material
- Disproportionality