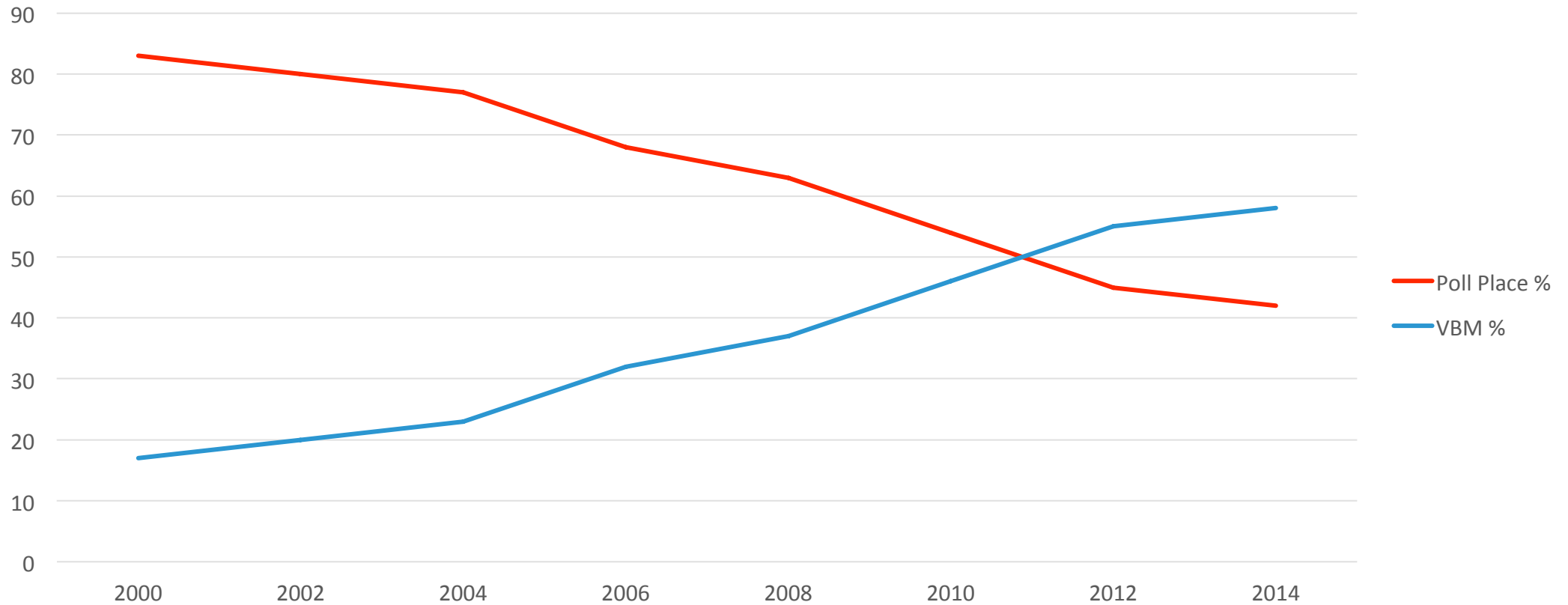


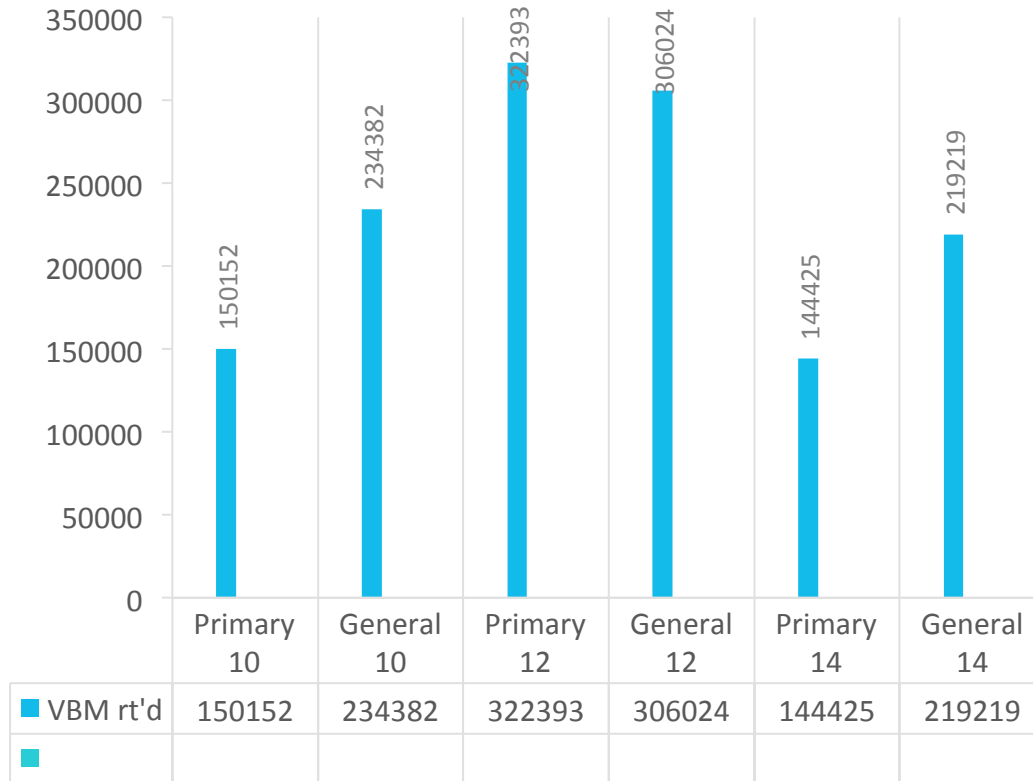
2016

WHAT WILL BE DIFFERENT FOR THE
VOTERS?

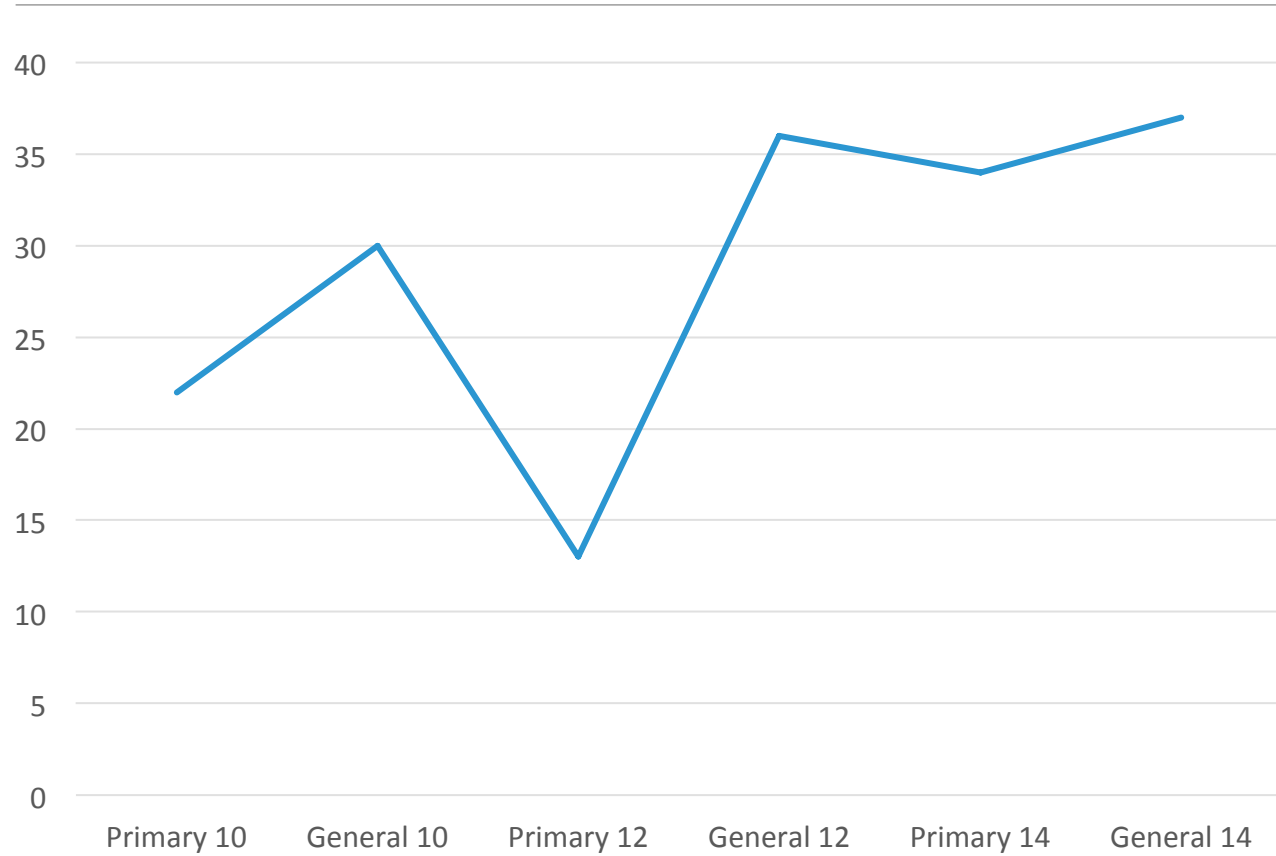
Polling Place vs VBM



Ballot Drop Off



Percentage of VBM Dropped Off



Postmark plus 3

SB 29 passed in 2014

Allows a ballot to be counted if postmarked by Election Day and received in the Election Office within 3 days.

Extended the Election Canvass to 30 days



AB 477 – Unsigned Ballot Envelopes

8 days for voters to submit a statement to Election Office

■ June 2012	210
■ Nov 2012	403
■ June 2014	232
■ Nov 2014	294

New Bills

- AB 44 – Statewide Recounts
- AB 363 – Authorizes a County to pick up ballots prior to the close of the polls for processing
- AB 554 – Allows a student that is a Legal Permanent Resident to work at the polls
- AB 1443 – The SOS to establish a Language Accessibility Advisory Committee
- SB 365 - SOS to adopt regulations for Mail Ballot Drop Boxes
- SB 439 – SOS to adopt regulations/standards for electronic poll books, Ballot on Demand systems

Vote Centers

SB 450

Mail all voters a ballot

Vote Centers

1/30,000 for 10 days

1/15,000 on Election Day

Drop Off Boxes

1/15,000 for 29 days



VoteCal

Pilot Counties – Sacramento and Orange Counties, **July 20, 2015**

El Dorado

San Joaquin

Tehama

Mendocino

Santa Barbara

Nevada

Solano

Tulare

San Luis Obispo

Alpine

Amador

Butte

Mariposa

Colusa

Mono

Placer

Sutter

San Benito

Yuba

Completed by March 2016

County	Message Type	Voter Status	Total	Action Required
Sacramento	Merge Voter Determine Survivor	Active	188	Y
Sacramento	Merge Voter Determine Survivor	Inactive	56	Y
Sacramento	Merge Voter Determine Survivor	Cancelled	53	Y
Sacramento	Potential Duplicate Match	Active	28	Y
Sacramento	Potential Duplicate Match	Inactive	4	Y
Sacramento	Potential Duplicate Match	Cancelled	3	Y
Sacramento	High Confidence Duplicate Match	Active	1,526	N
Sacramento	High Confidence Duplicate Match	Inactive	255	N
Sacramento	High Confidence Duplicate Match	Cancelled	250	N
Sacramento	High Confidence Duplicate Match	Pending	1	N

VoteCal

More accurate Voter File

- Duplicate records
- Death list
- Felon list

Data from DMV/COA sent to Counties in near Real Time

Address changes at DMV move voter to new county

Voters can:

Verify polling place, eligibility to vote, Perm VBM status

Opt in/out of Voter Information Guide

Verify VBM ballot counted

Verify Provisional ballot counted